

**Discovery  
Archive**

**Observing sessions  
involving visual  
discoveries of comets,  
plus Comet D/1993 F2  
(Shoemaker-Levy 9)**

**Prepared May 19-20, 2015 by David H. Levy**

THE IMAGES OF THE DAVID LEVY LOGBOOKS are for personal and research use for non-commercial purposes. The image copyright holders are David and Wendee Levy, Jarnac Observatory while the copyright for all other material is held by the RASC, unless otherwise indicated. Users are allowed to download or print materials from this website for purposes of research, teaching, and private study, without prior permission provided that the materials are properly credited to the copyright holders, David and Wendee Levy, Jarnac Observatory, and the RASC. All other uses such as commercial or scholarly reproduction, redistribution, publication or transmission requires permission from the copyright holders, and fees may be required. Please contact [levylogbooks@rasc.ca](mailto:levylogbooks@rasc.ca) to obtain permission, and fees information.

\*\*\* 6684 E.

Tuesday Nov 13/14

1859-2200

10-F

JM4

Jupiter

CN-III  $1^{\text{h}} 03^{\text{m}} \text{ W}$ .

Discovered Comet 1984 t

Levy-Rudenko.

at 1950 RA  $18^{\text{h}} 47^{\text{m}} + 9^{\circ} 50'$

$m_v 8.5 \sim$ .

1987

- 7309 AN Jan 1/2 | 1700-0500 | 3-F/61" | Steve / P/Halley,  
C/Sorrelle.
- 7310 AN 2/3 | 1700-0600 | 3-F/61" | Steve, Scumbiago / P/Halley,  
P/Comas-Sola, C/Sorrells. M1.
- 7311 M 3/4 0540-0600 | 7-F/<sup>Southside</sup> 3M4/<sup>Ophelia</sup> Miranda / CN3 0h10m E.
- 7312 M 4/5 | 0515-0715 | 10-2-F | 3M4/Miranda / - /  
CN3 0h40m E.  
Possible comet in Ophiuchus.
- 7313 M 5/6 | 0530-0600 | 2-F | 3M4 / Miranda / - / clouds.
- 7314 M. 6/7 | 0430-0700 | 10-F | 3M4 / Miranda / - / CN3 0h15m E.  
Confirmed new comet 17h17m.0  
+ 90.50m.
- 7315 M 7/8 | 0000-0100 | 3-F | South walk / - / - /
- 7316 M2 0530-0610 | 3-2-F | JM-4 / Miranda / - /  
Comet Levy 1987a.

Jan 7/8 1986  
0550 MST

7534E Thursday Oct 8/9/1900-1940A7-Fm(JM3) /  
Pegasus/-| CN3 0<sup>h</sup>30<sup>m</sup>W. "Independent  
Finding" of 1987S, Bradfield.

7535E Friday, Oct 9/10/1915-2300 intermittent | 3-F/  
Grace Wolf's party ... Moon, etc.

~~7536E~~ 7536E Saturday, Oct 10/11. | 1900-2030 | 10-F | JM3/  
Pegasus/-| CN3 1<sup>h</sup>15<sup>m</sup>W. Comet Bradfield  
1987 10 11.12  $M_1 = 6.6$  Tail 1.3° at PA 90  
? possible comet in Bootes

~~7537E~~ 7537E Sunday Oct 11/12/1900-2200 | 3-F | JM3 | Pegasus  
Jim Scotti | Comet confirmed  
14<sup>h</sup> 38<sup>m</sup>.3  
+17° 18'  $M_1 = 9.3$   
1987y.

1987Y LEVY COMET SCOTTI:

I've now seen 18 comets thanks to your new discovery Pos  
Positions measured visually to be (from P.O.S.S. overlays)

1987 at 12.087 14<sup>h</sup> 38<sup>m</sup>.40, +17° 18'.1 (14<sup>h</sup> 38<sup>m</sup>.3, +17° 18' in  
12.111 14 38.56, +17° 18'.1 (14<sup>h</sup> 38<sup>m</sup>.5, +17° 18' in

Magnitude estimated at 9 using the "D" method -  
("Discoverer must be right" method)

Now it's time to find #4 (actually #5 since I will  
always count 8/Hardly-IRAS-almost Levy).

Congratulations my Good Friend DAVID!  
-Jim Scotti

679E Fri 18/19/1930-2130/10-F/3M3/Minerva, Miranda/  
CN3 1h30mW.

80M2. 0340-0600/10-F/3M4, 3M3/Miranda, Minerva/  
-1CN3 1h30mE. Doubtful comet at this  
rough position Mar 9.5 21h30m +16.2° (1950)  
also suspect in Pegasus, probably galaxy. (found with Miranda).  
First mentioned suspect seen just at dawn.

681E Sat 19/20/1930-2130/10-F/Minerva, Miranda/  
CN3 1.1/4hW.

682M2 0430-0550/10-F/3M3, 4/Miranda, Minerva.  
CN3 1.1/4hE. With Miranda, I located the suspect  
again. Its new position is (20.5) 21 32.6 +16.8  
BUT last night's position is so uncertain that it  
is still just a suspect. However, I am now  
getting concerned about it! Why did it not appear to move  
this am in 1/2 hr?

83E Sun 20/21/1935-1935/7-F/3M3/Minerva 1-1 CN3  
0h15mW.

84M2 0345-0700/10-F/3M4, 3) Minerva, MIRANDA/  
CN3 1hE. New comet confirmed:  
21.49 21 35.2 +17.5°

A- 1130 UT

B- 1230 UT

last night's lack of motion was apparent: it was sliding

wed

59AN 23/24/2000-0600 / 10<sup>-7</sup>-f / Mt Bigelow / 61 / Steve  
 1989 PB - very very fast moving object.  
 Found it somewhat surrepticiously via  
 Compu Serve (As Skytel news), then positions (hourly)  
 (1°/hr motion) via Brian + MPCs, followed  
 by Steve's interpolating. We took many  
 pictures at 24.3 position, in hopes of "trap setting"  
 a trap. It worked - fringed image in 30s  
 exp at upper right. Put up boards - then  
 took images, then  
 saw moving object in through eyepiece -  
 it was moving very rapidly.

P/Lovis | - 0245 am - M1 = 16.3; . 1' diam  
 DC = 5.

P/BrM not in active or changing as last  
 night.

Thurs

060AN 24/25/2030-0600 / 10-F / JMH / ~~FA~~ Miranda | - /  
 CN3 1<sup>h</sup> 15<sup>m</sup> W. - Suspect 5UT 15<sup>h</sup> 27.7<sup>m</sup> +34° 12'  
 Neptune encounter seen almost all night  
 on TV inside. Blue spot. Triton,  
 CN3 Pics of P/BrM, pos development,  
 taken w/ Ophelia.

→ 25.21

Fri Aug  
 61AN 25/26/2025-0600 / 10-F / JMH, JMB / Miranda, Ophelia  
 - / CN3 1<sup>h</sup> 15<sup>m</sup> W. Confirmed new comet.

26.16 at RA (1950) 15<sup>h</sup> 25<sup>m</sup>.6 +34° 11'  
 M1 = 10.5

Charles Morison at Pine Mtn. Club, CA

(26cm refl.) Aug 26.285 15 25.1 +34 13'  
 M1 = 10.7 3.3 arc min DC-1-2 enhanced  
 by Swann and

8269E May 19/20 | 2130-2200~ / 10-3-F / Sunspace Ranch /  
Walter & Miriam Houston / - / ~~CA~~ general look

~~8270~~ 8270M2 19/20/21 | 0230-0500 / 10-F / JM4 / Miranda

CN3 0<sup>h</sup>40<sup>m</sup>E. Discovered my sixth comet  
at (1950) RA 23.54.3 and +27.5°. M12

8271E Sunday 20/21 | 2200-2215<sup>MDT</sup> / 7-F / Clyde's house /  
Clyde Tomblough. Pointing out where Corvus  
CV is.

8272M 0400-0545 CDT / 10+-F / Texas Star  
Party. Confirmed Comet 1990c.  
- 23 55 + 27.7°

8273AN Monday 21/22 | 3-F / Texas Star Party.

CN3 2<sup>h</sup> W with Menevise,  
then clouds.

8274EM Tues 22/23 | 3-F / Texas Star party.  
Houston: Surprise birthday party, clouds.

8275EM Wed 23/24 | 3-F / Texas Star Party, still  
lots of clouds. Brian Marston arrives.

8276AN Thu 24/25 | 3-F / Texas Star Party. 2 hr nap  
CN3e in middle of night. CN3 1<sup>h</sup>45<sup>m</sup>E with Amelia  
N. Goldberg's 13-inch reflector and new 32mm eyep

2S 10/11, Mon/1900-1915/2-F/Echo, 60p/Sunspot.

2EM 11/12, Tues/ 0300-0350/2-3-F/S. walk.

4E 12/13/03 1900-2130/3-f/10x100mm,  
then Bigelow/ HST. Very nice  
Conjunction of Venus, Mars, & Jupiter.

TM2 12/13/03 0245/0315/3-F/JMF.

S. 13/14/1300-1315/3-F/JMB/Echo, 60p/Sun.

7E2 2150-2210/2-F/JM4/Miranda/-/  
attempt for NGC, which I know is in outburst.  
Cloudy.

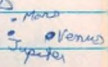
MS3 0335-0530/10-F/JM4/Miranda/-/  
CN3 2" E. Found a comet as follows:

03:45	1	42.2	+13	32	M1-7g
04:10	1	42.4	+13	34	

Coma 3', no tail.

E 14/15/1900-1920/7-F/Clyde's house/Patsy + Clyde/  
Beautiful conjunction of Venus, Mars and Jupiter.

2E 15/16/2030-2215/7-F/Clyde's house + Walters  
house/10", then 8" Spica Conjunction  
A most beautiful quadruple conjunction. ♀ + ♂



Hearty congratulations to a comet-discovering  
teen friend on his first dozen discoveries! - Walter  
We enjoyed observing the conjunction tonight  
with my 10-inch f/8mm. 78X  
(Clyde's 10) Tom Laughlin



202 M 2 / April 14/15 / 0345-0600 / 10-f / 3M4 /

Miranda 1-1 CN3 30 minutes, E.

Discovered a comet near  $\alpha$  and  $\beta$  Equulei.

Found just before 4 am after about 10 minutes of comet hunting; talking over the phone with Peter Jedicke. Since my computer was in the shop, I resurrected the Kay Pro to check to find out that the comet was a new one - what a feeling to find out it was!



$M_1 = 10.5$

Revised pos.

$\alpha = 21\ 23.4$   
(2000.0)

$\delta = +5\ 26$

9203 M April 15/16 / 0315-0450 / 10-f /

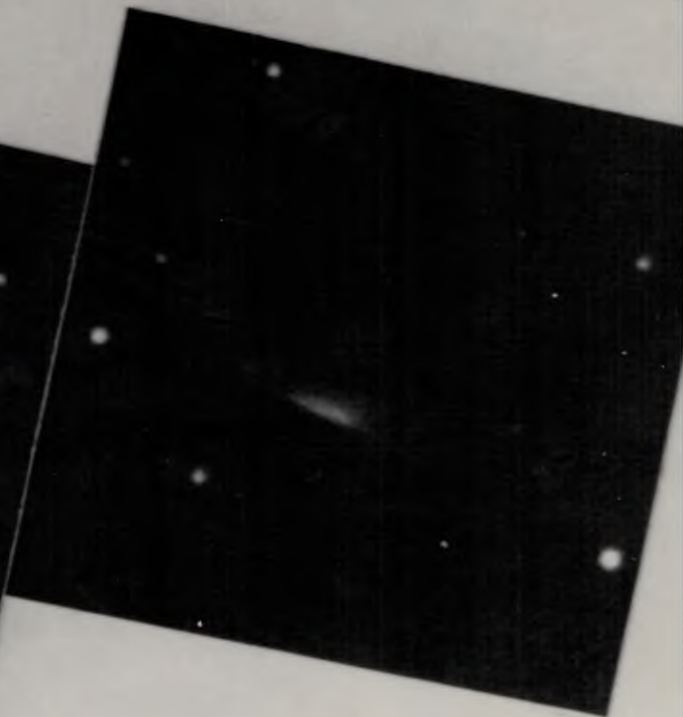
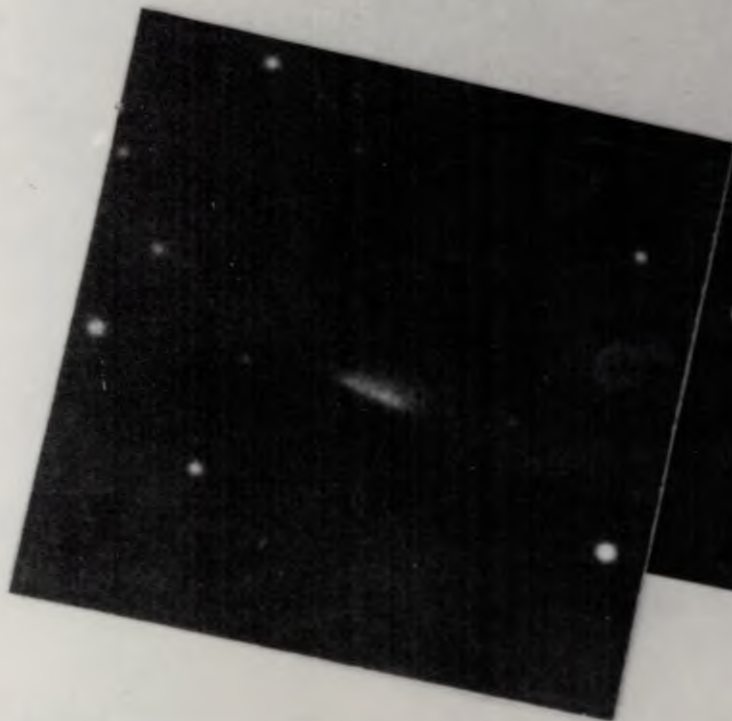
3M4/Miranda, Minerva 1-1 CN3 40 mins, E.

Met Comet ~~Taka~~ Takamizawa-Levy 1994f.



1993 03 24.43072

1993 03 24.3550



8949 AN  
Written

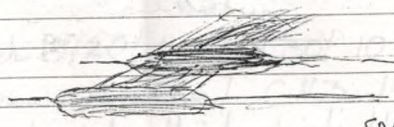
84th day / 281 to come

8945 /  
and  
total /

6:00pm?

CN3g

Carolyn discovered the most  
symmetrical comet today, just  
after 4.



on the 2 films,  
separated by  
~ 2 hours.

8946

written later:

We measured it tonight, and  
Jim confirmed it for us

8947 /

using the Spacewatch camera. It is  
very near Jupiter and appears to be  
a cluster or a swarm of comets  
- maybe the result of a single  
object that has just broken up.

8948

These films were taken at my suggestion  
on Tues night, it was purely I  
suggested we take a few fields using  
some less than optimum film, since  
we do G+C didn't want to waste film.

8949 HN  
N

23/24 1800-0400 / 3-F / Palomar /  
18" / G+C, Carolyn, Philippe /

CN3 ~ 30 films.

On the 25th, Carolyn finds a comet



on the 2 films  
sep 1 & 43m

8950 EM

24/25 / 1800-0400 / 3-2-F / Palomar /  
18" / G+C, Philippe / ~ 15 films

8951 E.

25/26 / 1800-2200 / 1-F / Jim confirms 1993e.

20-PO

Kol Nidre

15288E. October 1, 2006 / 1900 to 0000 / 3 / Jarmac  
 CN31 Rmn CN36 0.1 W.

Yom Kippur

\*\*\*

15289M2. October 1/2, 2006. / 0355 to 0600 / 10 / Jarmac  
 CN3K11, CN340m, CN3n<sup>CN3f</sup> CN3d 0.7h  
 with Miranda. Discovered a comet  
 0.6° from Saturn.

I began observing just before 4 am. I set up near Saturn, which was  $-10^\circ$  up and began a sweep. When Saturn came into the field, I immediately noticed a bright fuzzy object  $45^\circ$  away. The object could easily have been a ghost or a reflection of Saturn. I decided next to use Miranda's 8" f/10 sidekick to check. With a different optical configuration, the object should disappear or be in a different place, but it was still there.

I now needed to use all my 41 years of experience with comet hunting to make a decision. But just then Flaire helped. It just completed its run and it parked it. I pointed it at Saturn & managed a few pictures before dawn got too bright. Then I went inside and explored the images. I had trouble solving them, but figured it out - and saw clearly the object moving southward. I decided to report it to the CBAT, with the suggestion that it could be a ghost, but I did not believe that it was.

10-05

Then I reached Tom. We spent some time on these images. He communicated with Tim Span is Juris with Dan Green, and Tim decided to place the object on the NEO information page. There was nothing to do after that but wait. The low point was when Tom for a moment got a coordinate wrong & thought it was Titan. ~~Img~~ It might not be a comet, but it wasn't Titan!

Meantime we passed through an excellent Yom Kippur day. I did the Eitz Chayim prayer, and Wanda enjoyed blowing the Shofar at the end of the Concluding service. Then we ~~rather~~ left the shul. Story continues at next session.

E. October 2, Monday / 1830 to 0000 / 3:0r Chadash, then Tzava / 3-7 / CN31-11 with Dothan & Paula's Mynnpubrook lens. After CN31-11 began I checked email - no message. Then we watched TV for a while & I checked the mail once more. A letter from Dan - my object has been confirmed as a comet. I was shaking. My eyes were tearing - after 12 years. I printed the email and brought it in to show Wanda.

This was not a ghost of Saturn. C/2006 T1 is a new long comet!