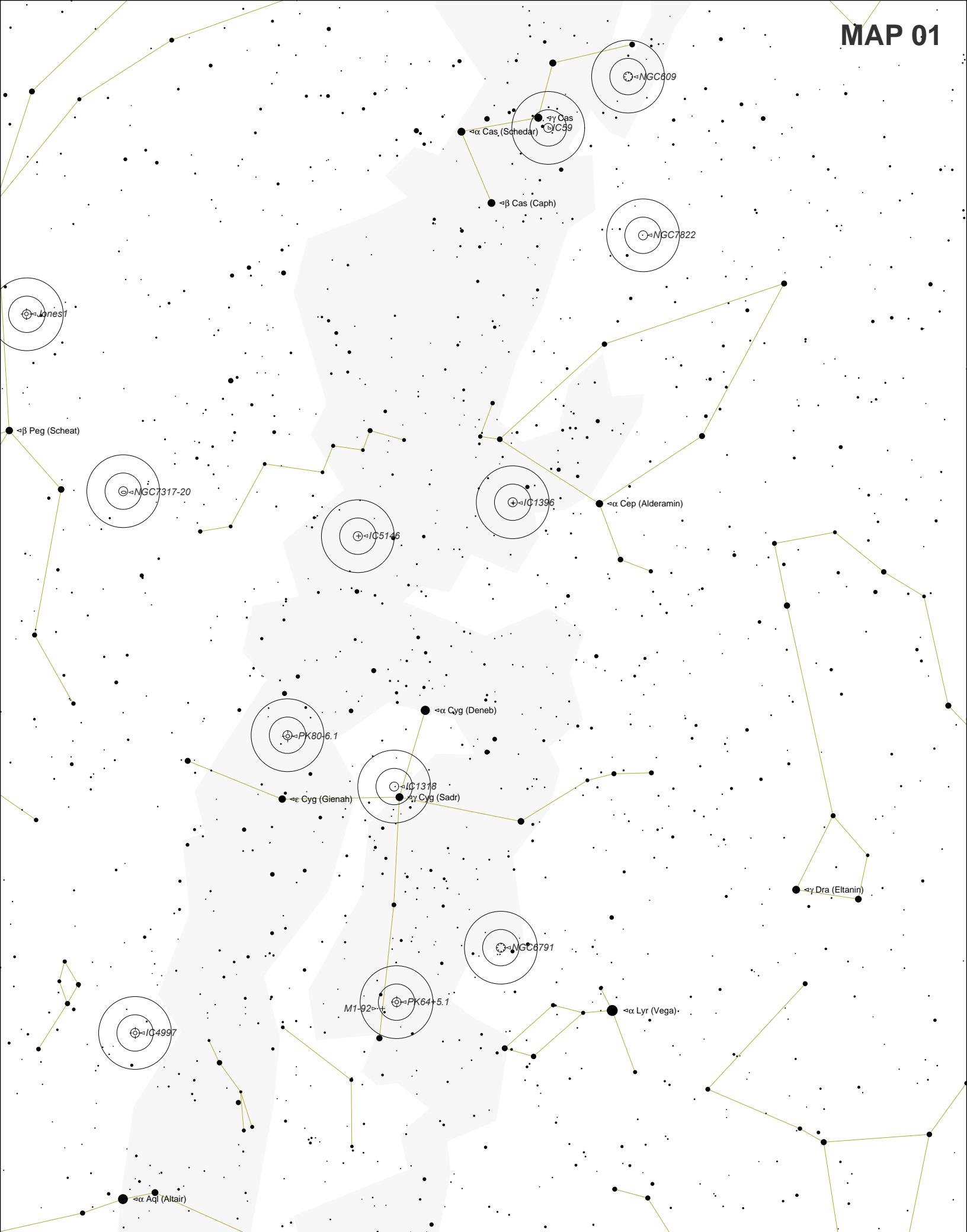
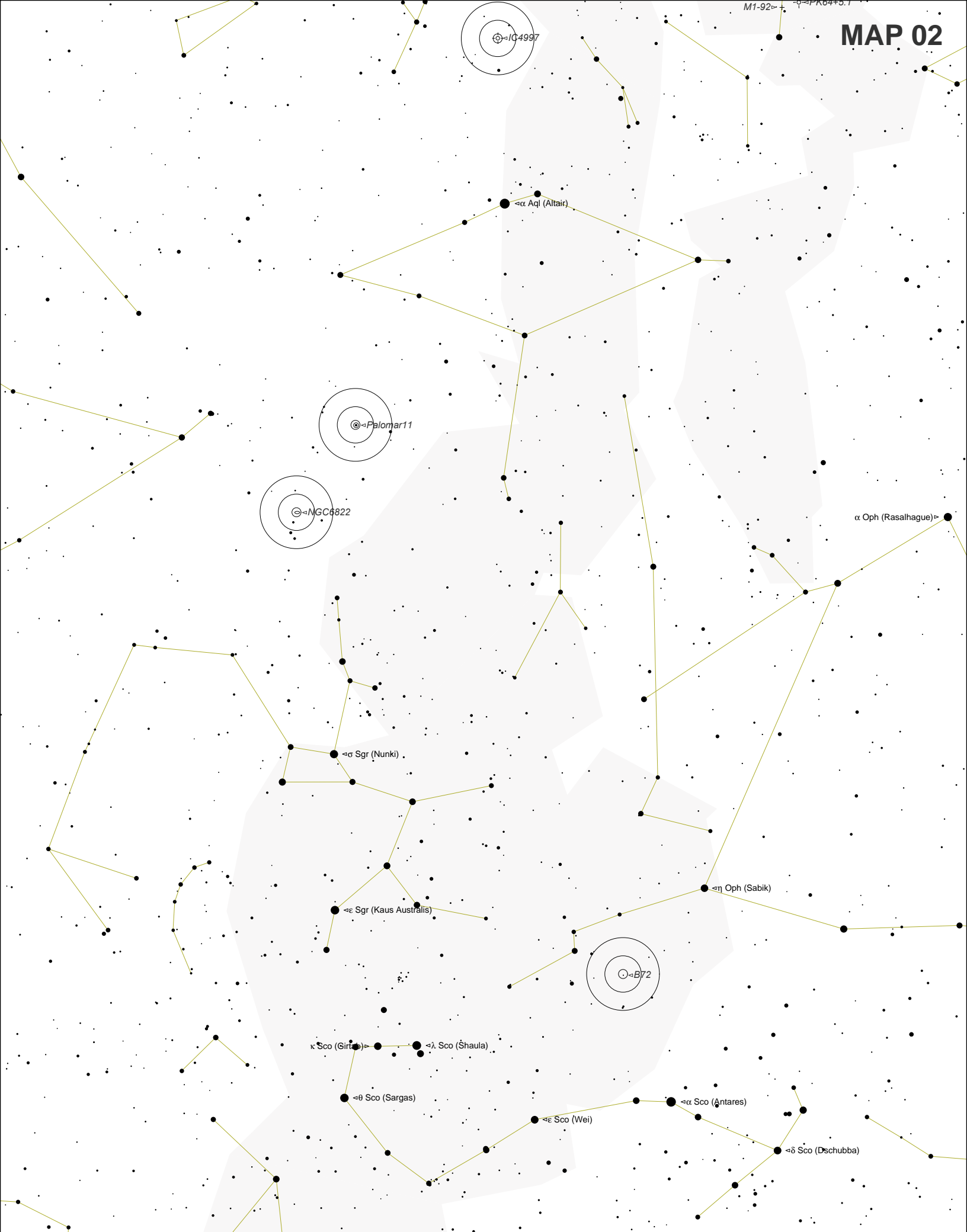


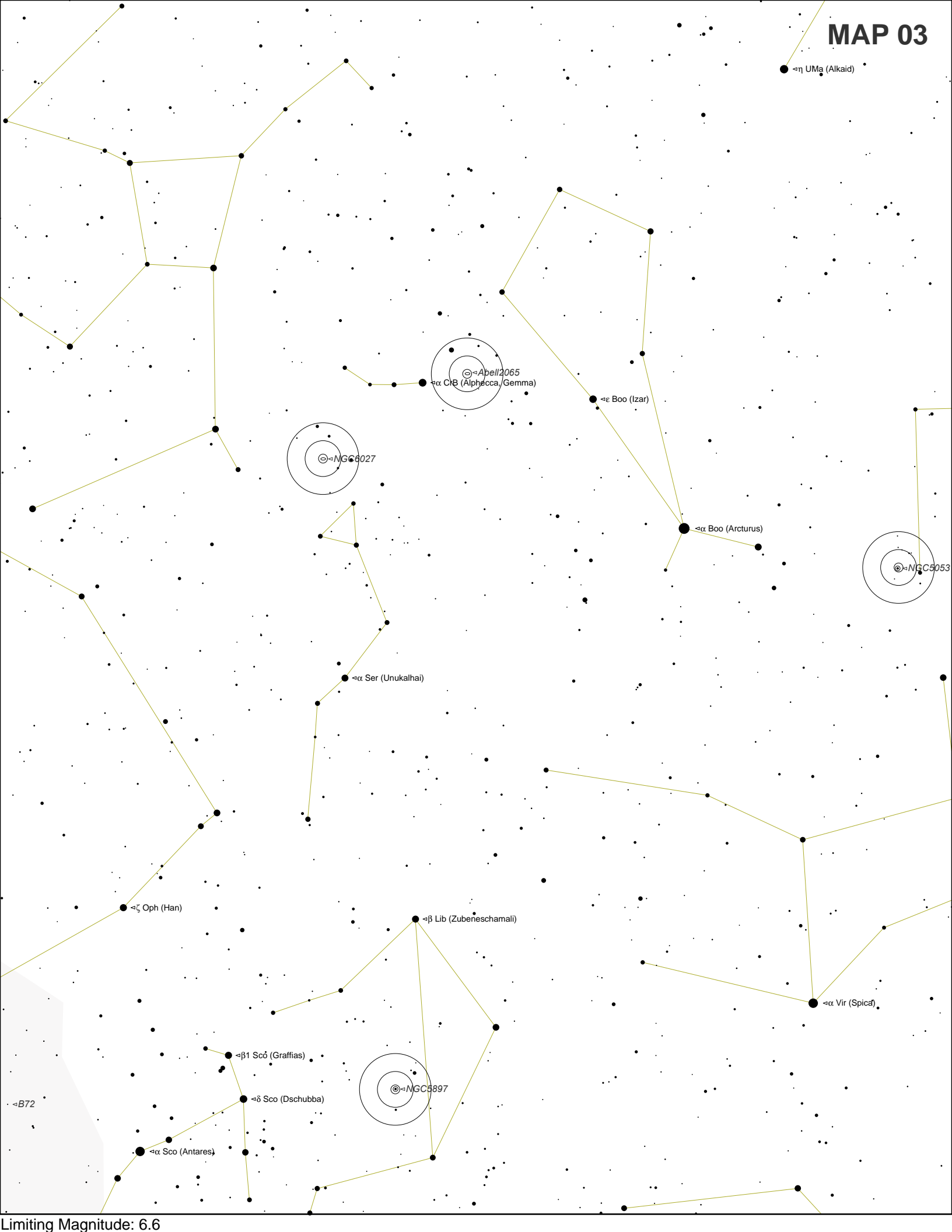
Deep-Sky Challenge Objects

No.	Object	Con	Type	R.A.	Dec	m_v	Size	U #	min. A	Map #
1	NGC 7822	Cep	E/RN	00:03.6	+68:37	-	60x30	15	30	1,6
2	IC 59	Cas	E/RN	00:56.7	+61:04	-	10x5	36	20-25	1
3	NGC 609	Cas	OC	01:37.2	+64:33	11	3	16	25-30	1,6
4	IC 1795	Cas	EN	02:24.7	+61:54	-	27x13	17	20	6
5	Maffei 1	Cas	G-E3	02:36.3	+59:39	~14	5x3	38	30	6
6	NGC 1049	For	GC	02:39.7	-34:29	11	0.6	354	25-30	8
7	Abell 426 r	Per	Gs	03:19.8	+41:31	16-Dec	30	63	20-40	5
8	NGC 1432/35	Tau	RN	03:46.1	+23:47		30x30	132	15-Oct	5
9	IC 342	Cam	G-SBc	03:46.8	+68:06	~12	17x17	18	20-30	6
10	NGC 1499	Per	EN	04:00.7	+36:37		145x40	95	8-12.5 RFT	5
11	IC 405	Aur	E/RN	05:16.2	+34:16		30x19	97	20	5,9
12	HH1	Ori	E	05:36.3	-06:45	~14.5	8"	271	15-Oct	5,9
13	IC 434/B 33	Ori	E/DN	05:41.0	-02:28		60x10	226	15-20 dark sky!	5,9
14	Sh 2-276	Ori	EN	5:48	1		600x30!	226	10-15 RFT	5,9
15	Abell 12	Ori	PN	06:02.4	+09:39	~13	37"	181	25-30	5,9
16	IC 443	Gem	SNR	06:17.0	+22:47		50x40	137	25-30	5,9
17	J 900	Gem	PN	06:25.9	+17:47	12.2	8"	137	20	5,9
18	IC 2177	Mon	E/RN	07:05.1	-10:42		120x40	273	20-30	9
19	PK 205+14.1	Gem	PN	07:29.0	+13:15	~13	~700	184	20-25	5,9
20	PK 164+31.1	Lyn	PN	07:57.8	+53:25	~14	6'40"	43	25	4
21	Leo I	Leo	G-E3	10:08.0	+12:18	9.8	10.7x8.3	189	30	4,7
22	Abell 1367	Leo	G's	11:44.0	+19:57	13-16	~60	147	30-40	6
23	NGC 3172	UMi	G-?	11:50.0	+89:07		0.7x0.7	2	25	6
24	NGC 4236	Dra	G-SBb	12:16.7	+69:28	13.6	18.6x6.9	25	20-25	6
25	Mrk 205	Dra	Quasar	12:22.0	+75:18	14.5	stellar	9	30	4,7
26	3C 273	Vir	Quasar	12:29.1	+02:03	12-Deg	stellar	238	25-30	7
27	NGC 4676	Com	G's	12:46.2	+30:44	14.1p	~ 2x1	108	25	7
28	Abell 1656	Com	G's	13:00.1	+27:58	16Deg	~60	149	25-30	3,7
29	NGC 5053	Com	GC	13:16.4	+17:42	9.8	10.5	150	20-Oct	3
30	NGC 5897	Lib	GC	15:17.4	-21:01	8.6	12.6	334	15-20	3
31	Abell 2065	CrB	G's	15:22.7	+27:43	~16	~30	154	50 in superb sky!	3
32	NGC 6027	Ser	G's	15:59.0	+20:45	~15	~ 2x1	155	40	2
33	B 72	Oph	DN	17:23.5	-23:38		30	338	8-12.5 RFT	1
34	NGC 6791	Lyr	OC	19:20.7	+37:51	9.5	16	118	20-25	1
35	PK 64+5.1	Cyg	PN	19:34.8	+30:31	9.6	8"	118	20	1
36	M 1-92	Cyg	RN	19:36.3	+29:33	11	12"x6"	118	25-30	2
37	NGC 6822	Sgr	G-Irr	19:44.9	-14:48	~11	10.2x9.5	297	15-Oct	2
38	Palomar 11	Aql	GC	19:45.2	-8	9.8	3.2	297		2
39	IC 4997	Sge	PN	20:20.2	+16:45	10.9	2"	163	20	1,2
40	IC 1318	Cyg	EN	20:26.2	+40:30		large	84	15 RFT	1
41	PK 80-6.1	Cyg	PN?	21:02.3	+36:42	13.5	16"	121	25	1
42	IC 1396	Cep	EN	21:39.1	+57:30		170x140	57	10-12.5 RFT	1
43	IC 5146	Cyg	E/RN	21:53.5	+47:16		12x12	86	20-25	1
44	NGC 7317-20	Peg	G's	22:36.1	+33:57	13-14	ea.~1	123	25-30	1
45	Jones 1	Peg	PN	23:35.9	+30:28	12.1	320"	124	25-30	1

For more information see the 2004 Observers Handbook







η UMa (Alkaid)

α Crt (Alpha Caeli, Gemma)

ϵ Boo (Izar)

NGC 6027

α Boo (Arcturus)

NGC 5053

α Ser (Unukalhai)

ζ Oph (Han)

β Lib (Zubeneschamali)

α Vir (Spica)

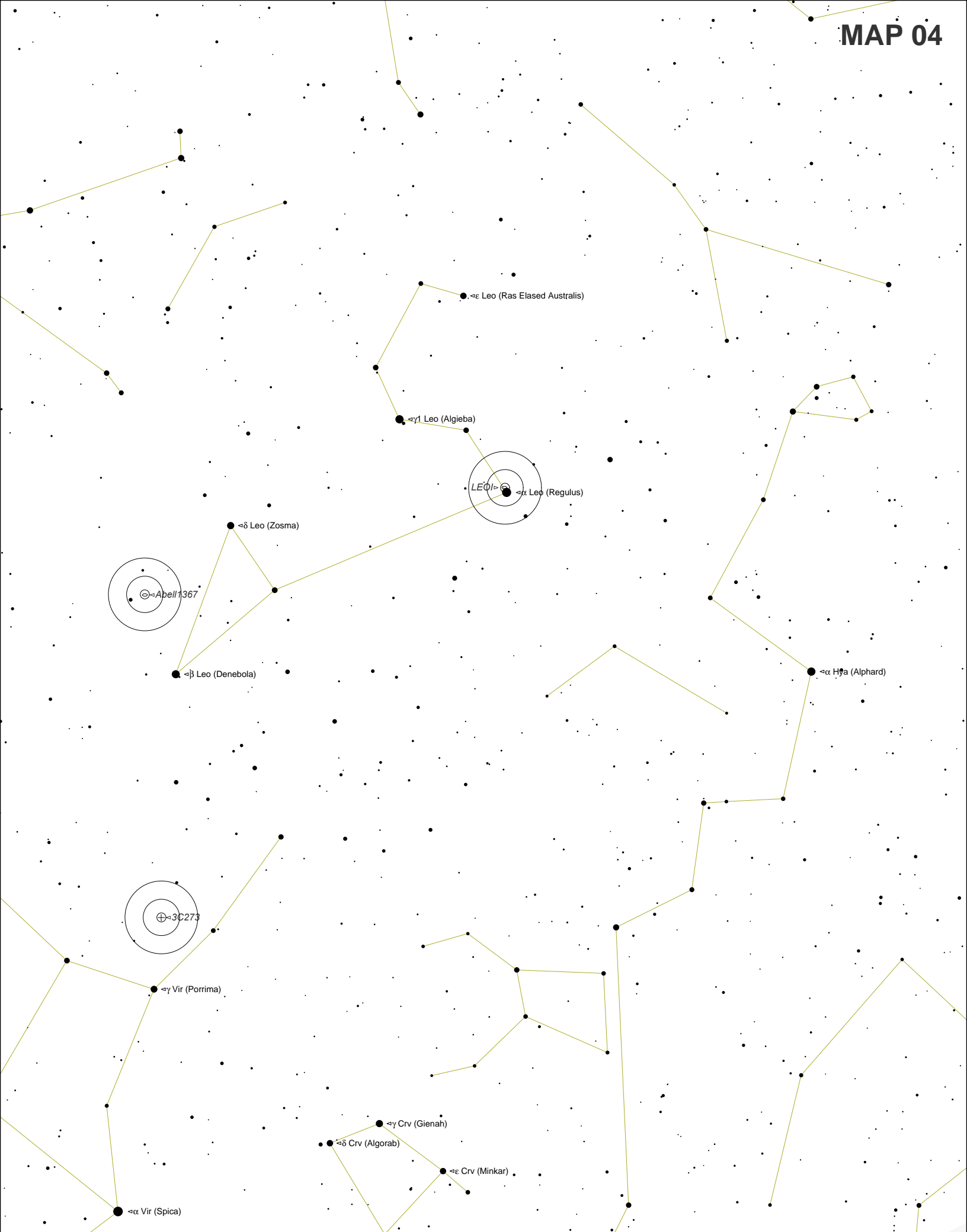
β 1 Sco (Graffias)

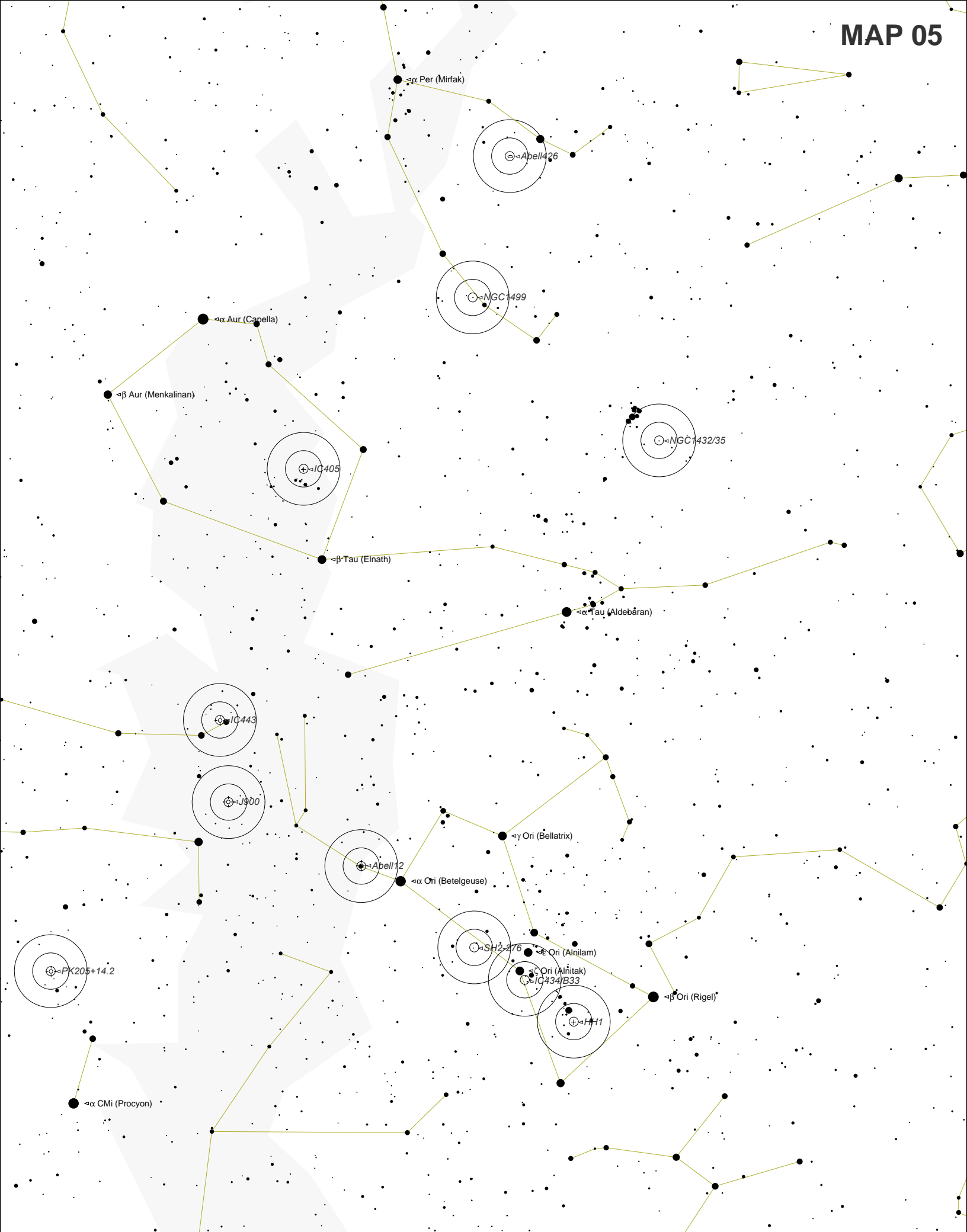
δ Sco (Dschubba)

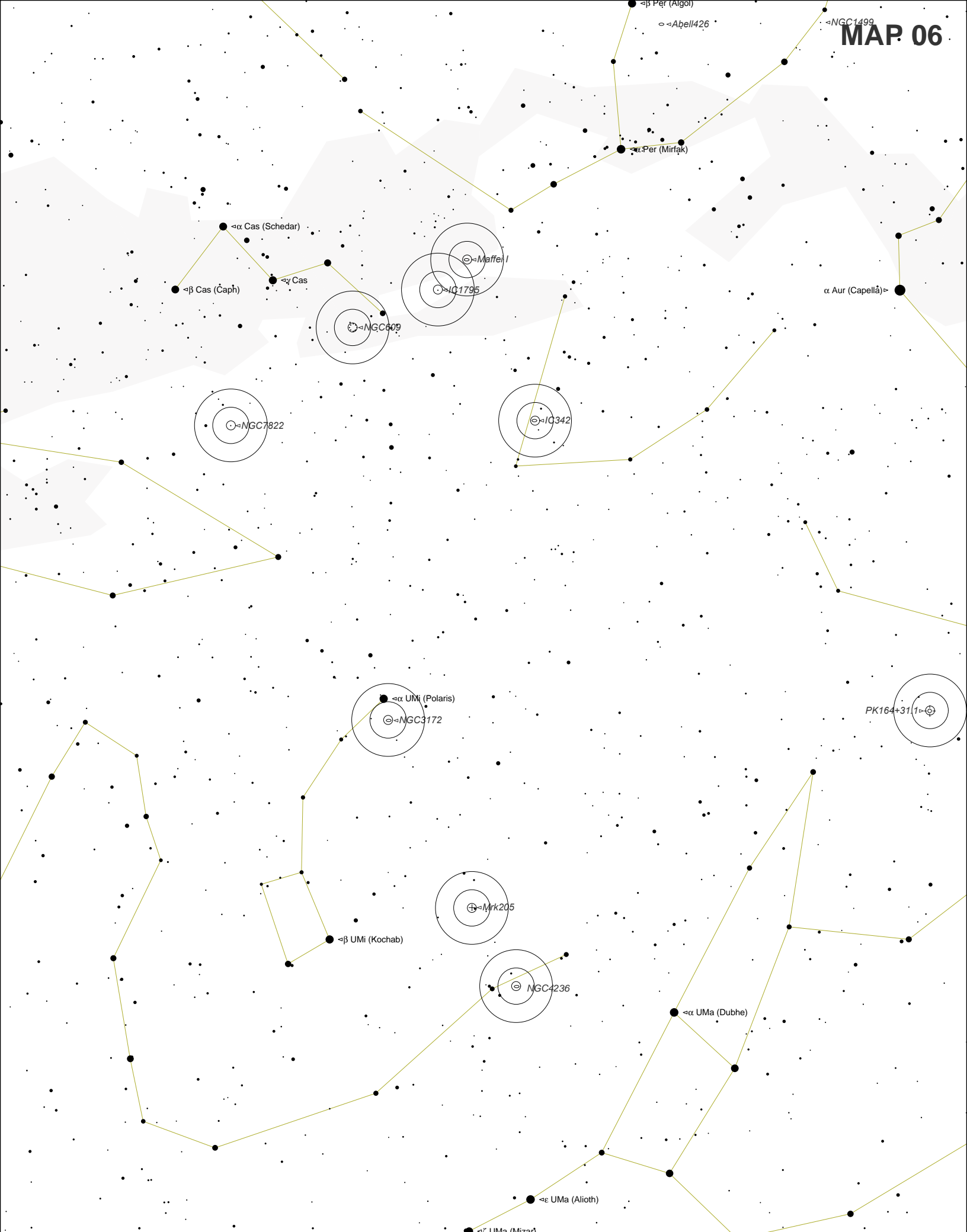
NGC 897

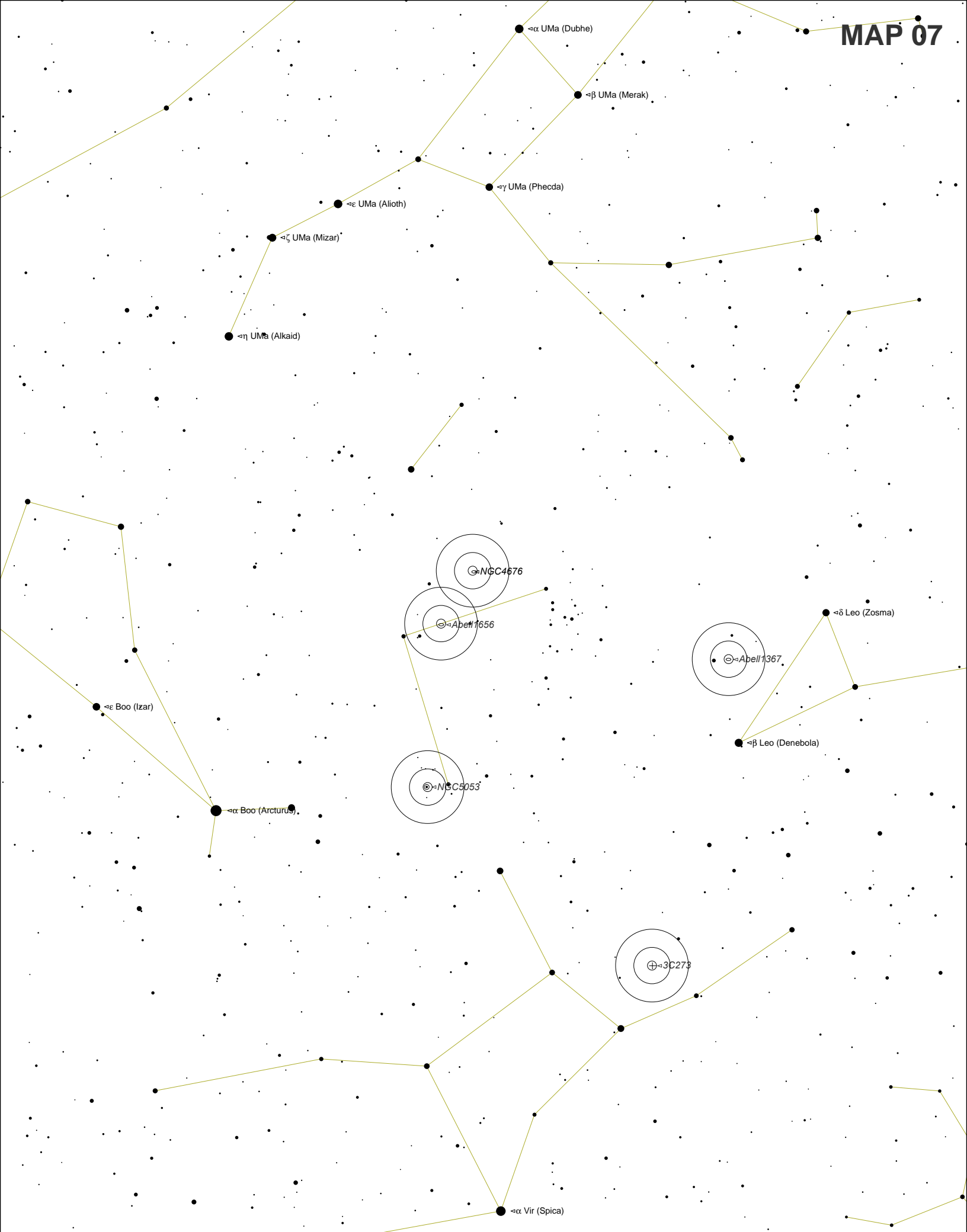
β 72

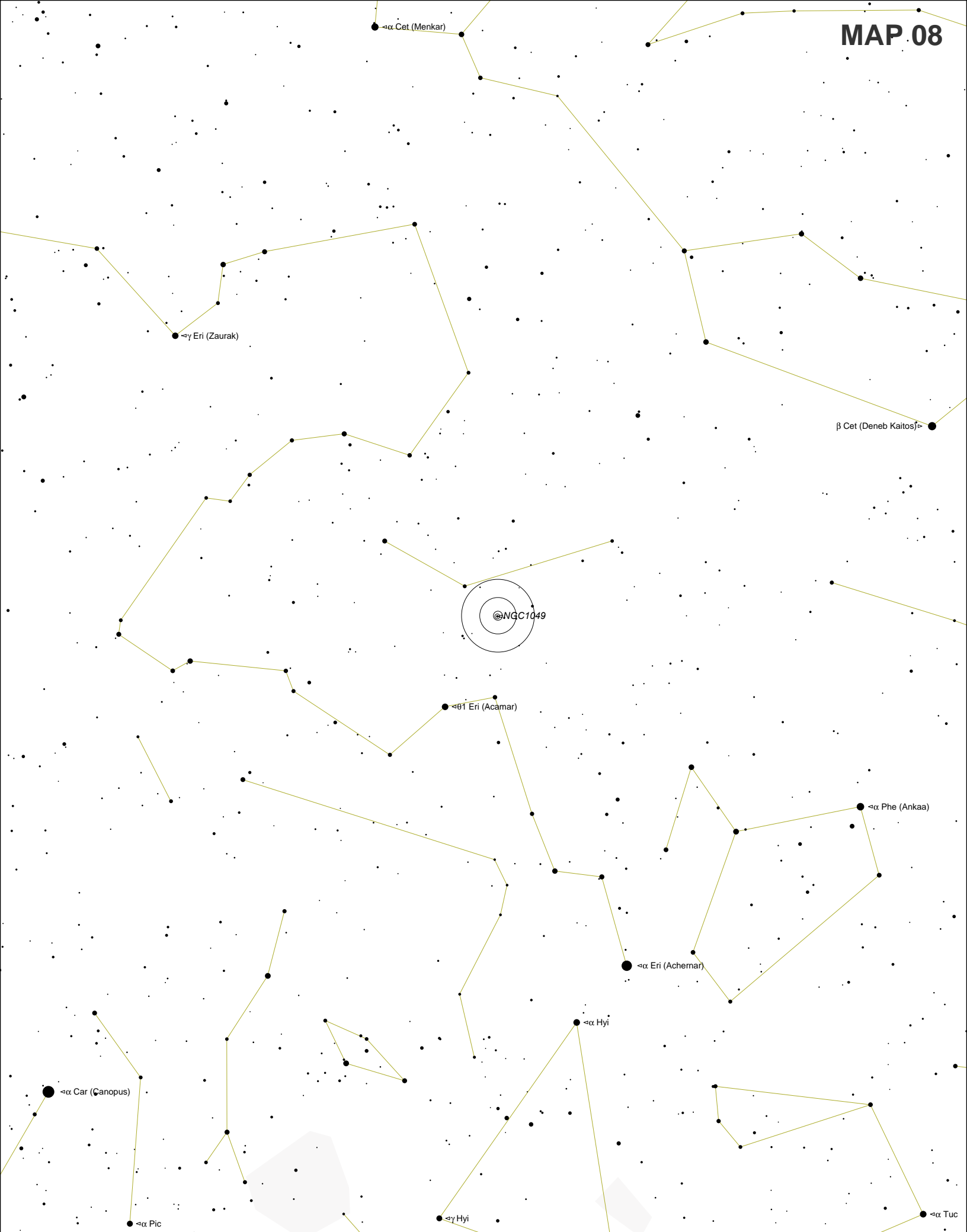
α Sco (Antares)

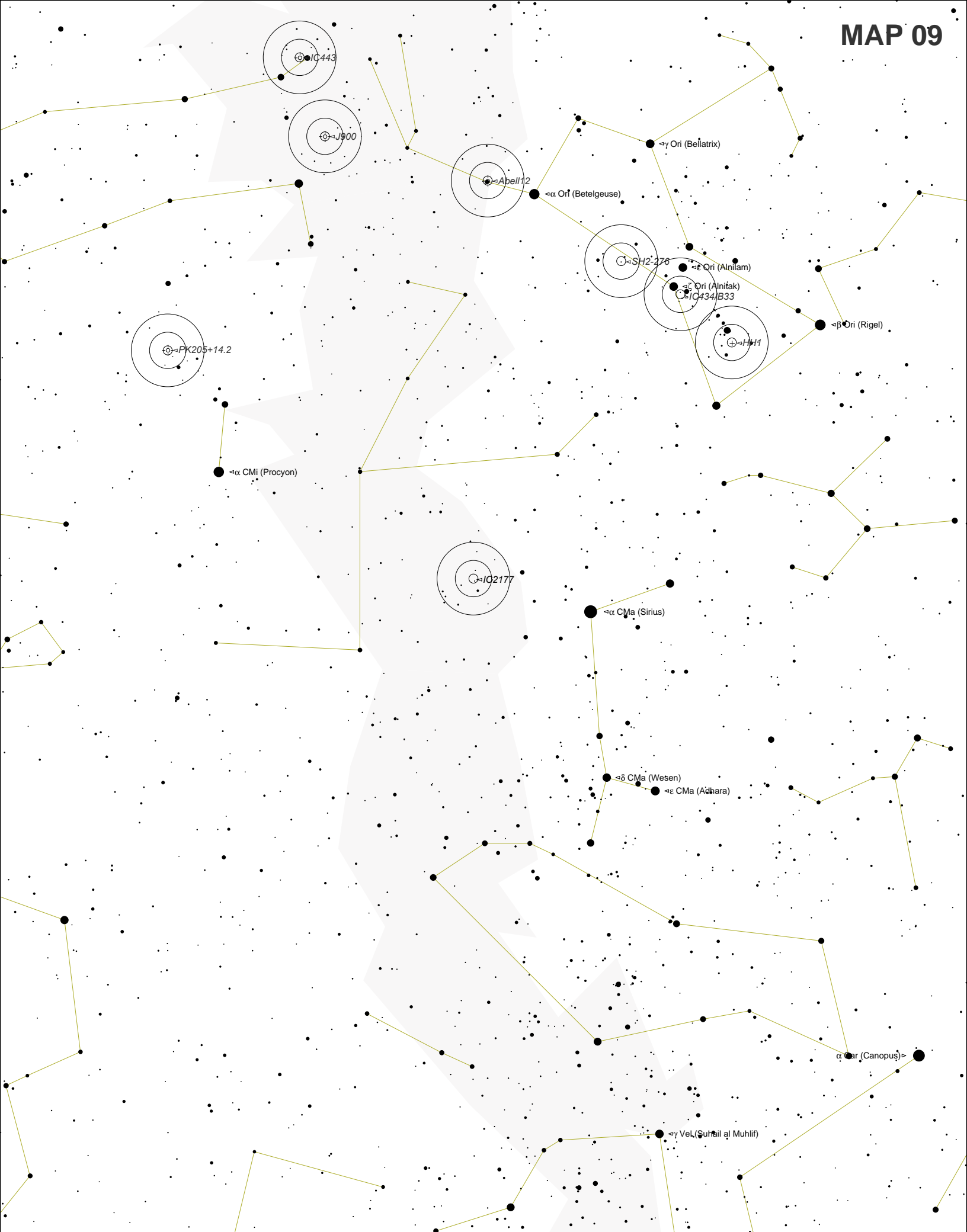












IC 443

J900

Abell 12

PK 205+14.2

SH 2-278

IC 434/B33

IC 2177

α CMi (Procyon)

α CMa (Sirius)

δ CMa (Wesen)

ϵ CMa (Achara)

α Car (Canopus)

γ Vel (Suhail al Muhlif)

γ Ori (Bellatrix)

α Ori (Betelgeuse)

ϵ Ori (Anilam)

ζ Ori (Anitak)

θ Ori

β Ori (Rigel)