

CN-IV; Comet Kilsten; 1966b.

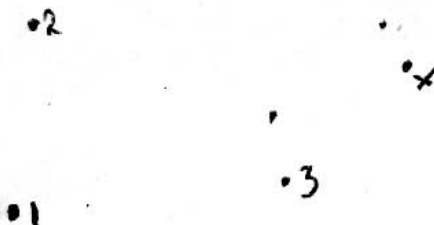
Observation No. 3.

Observer: David H. Levy
Instrument: 8" reflector,
55.6 power

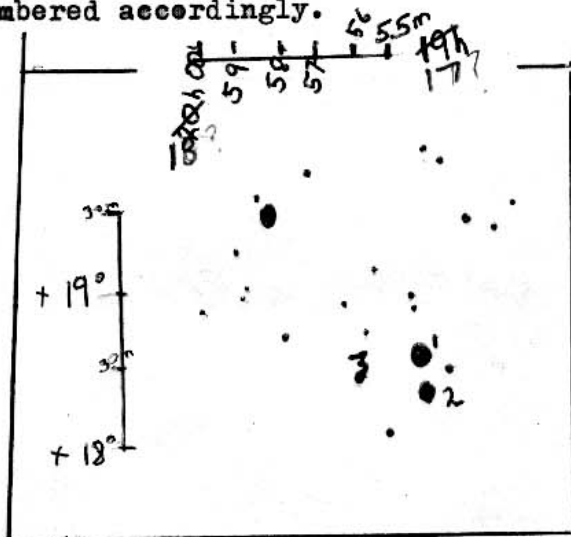
A. POSITIONAL DRAWING OF COMET 1966b.

Date: August 17, 1966

Time: 2340 E.D.T., 0340 E U.T.



.....
Below is a portion of the sky copied from Atlas Eclipticalis. Stars which can be identified with stars in the above drawing have been numbered accordingly.



B. MAGNITUDE ESTIMATE.

The comet is getting increasingly more difficult to see. Estimating from the known magnitude of a nearby star, I ~~assigned~~ decided that the comet was between +10.0 and +10.5 in magnitude.

Time: 2345 EDT; 0345 UT.

David H. Levy